

AB-88K

Mini Thermal Printer



ITEM	DESCRIPTION
Print	Direct Thermal 180mm/s
Font	203DPI (8dots/mm) Alphanumeric Character :95 International Character :32 Font : 12X24
Paper Spec	40 Thermal Paper 80±0.5mm MaxØ80.0mm
Paper Supply Method	Easy Paper Loading
Reliability	18,000,000 Lines 1,000,000 cuts ESC/POS Auto Cutter
Emulation	1 Port RS-232C, IEEE1284, USB, Buyer Language Support
Drawer Port	AC120~230V ± 10% (include) DC 24V, 2A
Interface	145 x 192 x 142 mm
Language	0 ~ 50°C
Power Supply (Adapter)	Sliding type
Dimensions (W*L*H)	
Operating Temp	
Auto Cutter	

ITEM	DESCRIPTION
Print	9 Pins Serial dot Matrix 4.6 LPS
Font	Alphanumeric Character :95 International Character :32 Font : 7 X 9
Paper Spec	40 Plain Paper 57.5 ± 0.5mm, 76 ± 0.5mm Max Ø75.0mm
Paper Supply Method	Auto Paper Loading
Reliability	9,000,000 Lines 1,500,000 cuts (only for AB-300KC) ESC/POS Auto Cutter
Emulation	1 Port RS-232C, IEEE1284 Buyer Language Support
Drawer Port	AC120 ~ 230V ± 10% (include) DC 24V, 2A
Interface	158 x 270 x 140 mm / 155 x 270 x 155 mm
Language	0 ~ 50°C
Power Supply (Adapter)	Half cut (only for AB-300KC)
Dimensions (W*L*H)	
Auto Cutter	

AB-300KC AB-300K

Mini Dot Impact Matrix Printer



AB-58MK

Mini Thermal Printer



ITEM	DESCRIPTION
Print	Direct Thermal 60mm/s
Font	203DPI (8Dots/mm)
	Alphanumeric Character :95 International Character :32 Font : 12 X 24
Paper Spec	Character Size 32
	Character per Line
	Paper type Thermal Paper Paper Width 57.5 ± 0.5mm Paper Roll Diameter Max Ø80.0mm
Paper Supply Method	Easy Paper Loading
	Reliability MCBF 18,000,000 Lines
Emulation	ESC/POS
	Drawer Port 1 Port
Interface	RS-232C, IEEE1284
	Language Buyer Language Support
Power Supply (Adapter)	AC120 ~230V ±10%(include) DC 12V,2A
	Dimensions (W*L*H) 130x 220 x 120 mm
Operating Temp	0 ~ 50°C

DESCRIPTION

ITEM

Print	Direct Thermal 150mm/s
Font	203DPI (8Dots/mm)
	Alphanumeric Character :95 International Character :32 Font : 12 X 24, 24 X 24 32
Paper Spec	Character per Line 32
	Character type Thermal Paper Paper Width 57.5 + 0.5mm Paper Roll Diameter Max Ø 80.0mm
	Paper Supply Method Easy Paper Loading Reliability MCBF 100 million pulses or more Auto cutter 1,000,000 cuts
Emulation	ESC/POS
	Auto cutter Half cut
Drawer Port	1 Port
	Interface RS-232C, IEEE1284
Language	Buyer Language Support
	Power Supply (Adapter) AC120 ~230V ± 10%(include) DC 12V,2A
Dimensions (W*L*H)	190x 130 x 132 mm
Operating Temp	0 ~ 50°C

AB-58C

Mini Thermal Printer



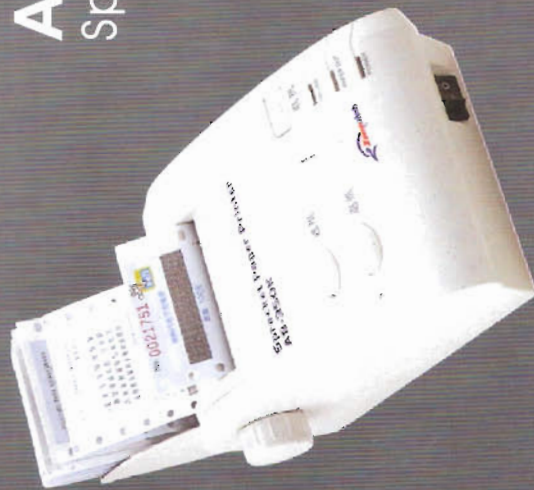
AB-320K Sprocket Printer



ITEM	DESCRIPTION
Print	9 pin serial impact dot matrix Approx. 4LPS Bi-directional 40 (7x9) Not applicable sprocket paper 76mm±0.5mm; Max. φ80mm 0.05mm~0.095mm Manual tearing 4K bytes AC120~230V±10%(include)DC 24V,2A 5 million lines 300 million dots/wire 0~50 °C 10~90% -25~70 °C 10~95% 146 x 288 x 86 mm
Ribbon Type	Printing Method
Paper Spec	Printing Speed
	Printing Direction
	Characters per Line
	Paper Type
	Paper Width
	Paper Roll Diameter
	Thickness
Cutting Method	Printer MCBF
Data Buffer	Print head life
Power Adapter	
Reliability	
Operating Temperature	
Operating Humidity	
Storage Temperature	
Storage Humidity	
Dimension (W*L*H)	

ITEM	DESCRIPTION
Print	9 pin serial impact dot matrix Approx. 4.6LPS Bi-directional 28 (7x9) ERC-39 1.5 million characters Sprocket paper 76mm±0.5mm;89mm±0.5mm Max. φ80mm 0.05mm~0.095mm Manual tearing 4K bytes AC 100~240V, 50~60HZ 5 million lines 8 million lines 0~40 °C 162 x 295 x 170 mm
Ribbon	Printing Method
Paper Spec	Printing Speed
	Printing Direction
	Characters per Line
	Ribbon Type
	Ribbon Life
	Paper Type
	Paper Width
	Paper Roll Diameter
	Thickness
Cutter	Cutting Method
Data Buffer	
Power Input	Printer MCBF
Reliability	Print head life
Operating Temperature	
Dimension (W*L*H)	

AB-350K Sprocket Printer





AB-R8060C



AB-R5860C



AB-W5830



AB-R5850



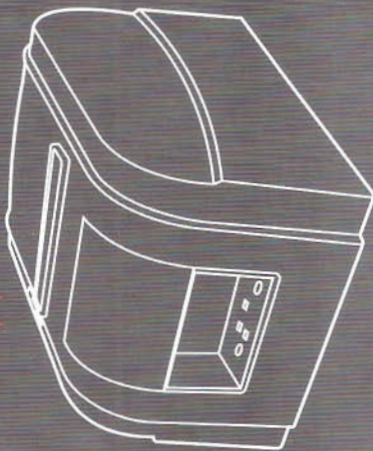
AB-R5830



AB-W5820

Printing Method	Line Thermal	Line Thermal	Line Thermal	Line Thermal	Line Thermal
Printing Speed	60mm/s Max	60mm/s Max	25mm/s Max	25mm/s Max	25mm/s Max
Resolution	203DPI (8Dots/mm)	203DPI (8Dots/mm)	203DPI (8Dots/mm)	203DPI (8Dots/mm)	203DPI (8Dots/mm)
Character Set	Alphanumeric Character :95	Alphanumeric Character :95	Alphanumeric Character :95	Alphanumeric Character :95	Alphanumeric Character :95
Character Size	Font : 12 X 24	Font : 12 X 24	Font : 12 X 24	Font : 12 X 24	Font : 12 X 24
Character per Line(CPL)	32	32	32	32	32
Paper Roll Diameter	Thermal Paper	Thermal Paper	Thermal Paper	Thermal Paper	Thermal Paper
	80 ± 0.5mm	57.5 ± 0.5mm	57.5 ± 0.5mm	57.5 ± 0.5mm	57.5 ± 0.5mm
	Max Ø 60.0mm	Max Ø 60.0mm	Max Ø 30.0mm	Max Ø 30.0mm	Max Ø 20.0mm
Auto cutter	Yes	Yes	No	No	No
Paper Supply Method	Easy Paper Loading	Easy Paper Loading	Easy Paper Loading	Easy Paper Loading	Easy Paper Loading
Reliability (MCBF)	100,000,000 pulses or 50km	100,000,000 pulses or 50km	100,000,000 pulses or 50km	100,000,000 pulses or 50km	100,000,000 pulses or 50km
Emulation	ESC/POS	ESC/POS	ESC/POS	ESC/POS	ESC/POS
Sensor	Paper End Sensor	Paper End Sensor	Paper End Sensor	Paper End Sensor	Paper End Sensor
Language	Buyer Language Support	Buyer Language Support	Buyer Language Support	Buyer Language Support	Buyer Language Support
Power Supply(Adapter)	DC 12~24V,2A	DC 12~24V,2A	DC 5V,2A	DC 5V,2A	DC 5V,2A
Dimensions(W*L*H)	130x117x96mm	106x110x104mm	110x64x80mm	85x85x50mm	79x45x40mm
Operating Temp	0 ~ 50°C	0 ~ 50°C	0 ~ 50°C	0 ~ 50°C	0 ~ 50°C

AB-80K Thermal Printer



ITEM /TYPE	ZQ-3000
Main Board	POS low dissipation main board
CPU	C3 800MHZ
Memory	256M
Hard Disk	80G
Printer	76mm impact printer
	58mm thermal printer(selectable)
Display	10.4 " TFT display
Keyboard	95 keys programmable
Customer Display	LCD 20X2-lines matrix display
Card Reader	Mono/Dual track
Ethernet	10/100M Be suited by itself
Interface	1parallel, 2serial, 3 USB
Cash Drawer	3 functions lock cash drawer
Power Supply	180W ATX Power supply

ITEM	DESCRIPTION
Print	Direct Thermal
	150mm/s
Font	203DPI (8dots/mm)
	Alphanumeric Character :95
	International Character :32
	Font : 12X24
	40
Paper Spec	Thermal Paper
	80±0.5mm
	MaxØ80.0mm
Paper Supply Method	Easy Paper Loading
Reliability	18,000,000 Lines
Emulation	ESC/POS
Drawer Port	1 Port
Interface	RS-232C, IEEE1284, USB,
Language	Buyer Language Support
Power Supply (Adapter)	AC120 ~230V ± 10% (include) DC 24V,2A
Dimensions (W*L*H)	225 x 133 x 147 mm
Operating Temp	0 ~ 50°C

POS Terminals ZQ-3000 POS Terminals



ZQ-TR2200

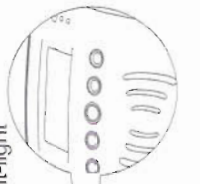
Time Recorder



Flash ID
Card to record



128×64 LCD
display menu
with night-light



TN LCD display
time and info.

58mm Thermal
Printer Inside



Zonerich ZQ-TR2200 Time Recorder is the product integrated of high technology, multi-function and intelligence. It has more functions such as LCD display, ID card reading and writing, print attendance reports. It's no longer to statistic the attend-ance records by manual as traditional attendance machine.

ZQ-TR2200 has the following specifications:

- 58mm thermal printer inside to print real-time attendance record.
- Flash ID card to record attendance.
- Enable to quickly inquiry the detailed attendance statements of the staff of each department.
- Many kinds of statistics reports printing.
- User-friendly control panel, easy to operate.
- With reserved battery, system can work 3-6 hours without external power supply.

ITEM /TYPE

ZQ-TR2200

Output Media	58mm thermal printer inside
Media	Contactless ID card
Front Display	8" STN LCD display time
Upper Display	128x64 LCD display menu
Flash	1MB
Memory Backup	Clock and data can be held for 2 years during power failure
Interface	RS232, PS2, USB
Power Supply	100~240V Ac±10% 50/60HZ
Dimension (W*L*H)	168 x 135 x 233 mm

Electronic Cash Register



ZQ-ECR1000

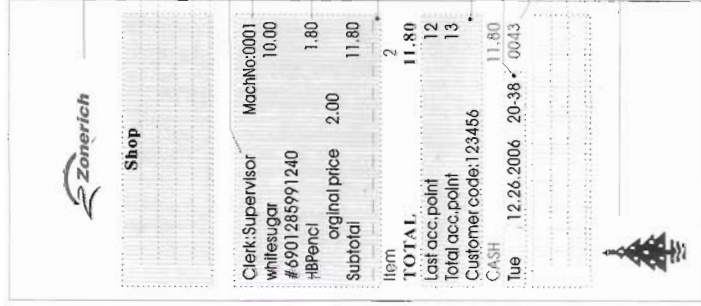


ZQ-ECR1200



ZQ-ECR2000

ITEM / TYPE	ZQ-ECR1000	ZQ-ECR1200	ZQ-ECR2000
Printer Head	Thermal		
Printing Speed	Max: 60mm/s		
Paper Supply Method	Auto paper loading	Easy paper loading	
Paper width	58mm		
Operator Display	128x64 LCM		
Customer Display	9 digits 7-segment VFD		
Keyboard	59 Keys	40 Keys	50 Keys
Departments	50		
Clerks	50		
Interface	1RS232, 1RS485, 1PS2		
Cash Drawer	9V cash drawer		
Power Supply	Transformer		
PLUs	Max. 12000		
Media Totals	9		
Memory Billing	Yes		
Customer Management	Yes		
Stock Management	Yes		
Profit Analysis	Yes		
Dimension (W*L*H)	340 x 380 x 250 mm	330 x 360 x 205 mm	



For information on the store-specific LOGO.

Information line 1
Information line 2
Information line 3
Information line 4
Information line 5
Cashier's Name
Machine No.

Membership unit price

For information on Printing Control - Font Settings, please refer to this chapter's '2. Printing Control - Font Settings'.

Member information

Time of receipt printing:
Receipt No.

Information line 6
Information line 7
Information line 8

Individualized LOGO

ZQ-ECR1000 electronic cash register comes with 10 individualized LOGOs, of which any is printed to the left by default.

- 5rows×20cols LCD operator display, high light VFD customer display.
- Very high-speed and silent thermal printer.
- Built in tiny barcode printer, support EAN13 barcode printing.
- A lot of external devices support. Such as Kitchen printer, scale, customer display and modem.
- Automatically recognize 4 kinds of in-store barcode.
- Electronic journal support.
- Customer management support.
- Communication with PC in on-line mode.
- PLU sale amount, quantity top25 report.
- PLU profit analysis report.
- PLU safe stock report.
- Histogram daily and PTD report

ZQ-TS7010, TS7015

POS monitor



with touch panel

Model

	ZQ-TS7010	ZQ-TS7015
LCD Display Size	TFT LCD 10.4 inch	TFT LCD 15 inch
Max. Resolution	800 x 600	1024 x 768
LCD Brightness	200 cd/m ²	250 ~ 350 cd/m ²
Contrast Ratio	400:1	500:1
Response Time	35ms	12ms
Touchscreen	5-wire Resistive	
USB port	1 USB Port for touch screen	
PS/2 port (Option)	1 PS/2 Port For Keyboard and Magnetic Card Reader	
Power port	1 Power Port For 12V Power Input	
VGA	1 VGA Port For VGA Signal Output	
Power Adapter	DC 12V 2A	
Dimensions (W x H x D)	A-121: 320 x 278 x 200 mm	A-152: 360 x 330 x 200 mm
Operating Temperature	0°C ~ 35°C	

Optional Peripherals

Keyboard And Card Reader	39 Keys (For 10.4), 47 Keys (For 15) And Integrated MCR Single/Dual/Triple Track
Customer Display	Integrated VFD 2LinesX20 Characters Customer Display Integrated LCD 2LinesX20 Characters Customer Display

ZQ-TP8010, ZQ-TP8015

POS Terminal



with touch panel

Easy-loading paper
80mm printer inside

Model

	ZQ-TP8010	ZQ-TP8015
Processor	VIA C3-800	
Memory	256MB standard, Up To 1GB	
Size / Resolution	10.4" TFT LCD / 800 x 600 Or 15" TFT LCD / 1024X768 (max)	
Touch Screen	5 wires Resistive	
Parallel/Serial Port	1 x Bi-directional Parallel, 2 Serial ports	
Standard USB Port	2 USB2.0 Ports	
PS/2 Port	1 For Mouse And 1 For External Keyboard	
LAN Port	1 RJ45 10/100/ Base-T	
External IDE/DC port	1 IDE Port And 1 Big 4 Pins For DC Output	
Hard Disk Drive	Built-in 2.5" 40GB (standard)	
Power Supply	25W External Power Adapter	
Dimensions (W x H x D)	377 x 410 x 320 mm	
Operating Temperature	0°C ~ 35°C	
Inside Printer	80mm Thermal Printer Easy Paper loading	

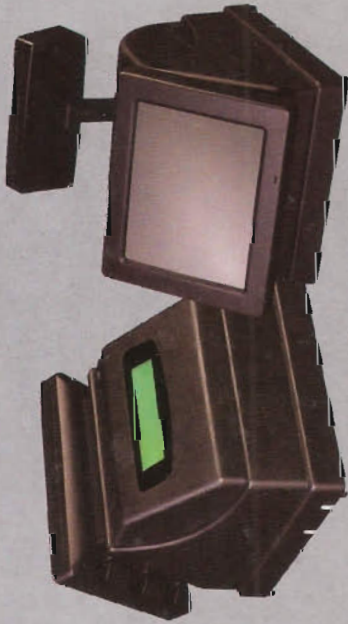
Optional Peripherals

Keyboard And Card Reader	39 Keys (For 10.4), 47 Keys (For 15) And Integrated MCR Single/Dual/Triple Track
Customer Display	Integrated VFD 2LinesX20 Characters Customer Display Integrated LCD 2LinesX20 Characters Customer Display



POS TERMINAL

with touch panel



ZQ-T9010, T9015 ZQ-T8010, T8015

Specification

Processor VIA C3-800
 Memory 256MB standard, Up To 1GB
 Size / Resolution 10.4 inch TFT LCD / 800 x 600 Or
 15 inch TFT LCD / 1024 X 768 (max)
 Touch Screen 5 wires Resistive
 Parallel/Serial Port 1 x Bi-directional Parallel, 2 Serial ports
 Standard USB Port 2 USB2.0 Ports
 PS/2 Port 1 For Mouse And 1 For External Keyboard
 LAN Port 1 RJ45 10/100/Base-T
 External IDE/DC port 1 IDE Port And 1 Big 4 Pins For DC Output
 Hard Disk Drive Built-in 2.5" 40GB (standard)
 Power Supply 25W External Power Adapter
 Dimensions (W x H x D) 377 x 410 x 320 mm
 Operating Temperature 0°C ~ 35°C


Optional Peripherals

Keyboard And Card Reader 39 Keys (For 10.4), 47 Keys (For 15) And Integrated MCR Single/Dual/Triple Track
 Customer Display Integrated VFD 2LinesX20 Characters
 Customer Display Customer Display
 Customer Display Integrated LCD 2LinesX20 Characters
 Customer Display Customer Display
 Note: ZQ-T9010, T9015 VFD or LCD customer display (standard)

ZQ-T9000D

Dual screens pos terminal
with touch panel


Model ZQ-T9000D

Processor Intel Celeron M-600
 Memory 256MB standard, Up To 1GB
 Size / Resolution 10.4 inch TFT LCD / 800 x 600.
 15 inch TFT LCD / 1024 X 768 (max)
 Touch Screen 5 wires Resistive
 Parallel/Serial Port 1 x Bi-directional Parallel, 4 Serial ports
 Standard USB Port 4 USB2.0 Ports
 Cash Drawer Port 1 24V RJ11 Drawer Port
 PS/2 Port 1 For Mouse And 1 For External Keyboard
 LAN Port 1 RJ45 10/100/Base-T
 External IDE/DC port 1 IDE Port And 1 Big 4 Pins For DC Output
 Hard Disk Drive Built-in 2.5" 40GB (standard)
 Power Supply 250W External Power Adapter
 Dimensions (W x H x D) 377 x 460 x 320 mm
 Operating Temperature 0°C ~ 35°C


Optional Peripherals

Keyboard And Card Reader 39 Keys (For 10.4), 47 Keys (For 15) And Integrated MCR Single/Dual/Triple Track

Specifications subject to change without notice


ZQ-LCD 2200

- LCD display
- Characters:40(20 characters×2 lines)
- Characters set:ANK and ASCII
- Dot matrix:240×64
- MCBF:100,000hours
- Power adaptor:5V,0.5A
- Interface:Serial 9600BPS
- Dimension:225(W)×85(D)×375(H)


ZQ-KB95

- 95keys
- 4 positions lock
- Programmable keyboard


ZQ-400A

- 3-position locks for different levels
- Noiseless track
- Steel box, high quality
- 5 bill notes compartments and 5 coin compartments
- With check slot
- Size:405(W)X430(D)X100(H)


ZQ-420B

- Steel box ,high qualities
- Steel drawer board
- 4 bill notes compartments and 6 coin compartments
- Noiseless track
- Size:420(W)X445(D)X100(H)


ZQ-09A

- 9 inch Mono Display
- Resolution:Max.800×600
- Power adaptor:AC110-240V ,50/60Hz
- Dimension:245(W)×234(D)×239(H)


ZQ-104A

- 10.4 inch TFT display
- Dot distance: 0.264(H)×0.264(V)/mm
- Brightness:350cd/m²
- Display color:26.2M
- Power:DC 12V


ZQ-420C

- 3-position locks
- Noiseless Track
- 4 bill notes and 5 coin compartments
- With check slot
- Separated pulled out drawer box for cash and coins
- Size:420(W)X445(D)X100(H)


ZQ-LS5000 Laser Scanner

- Barcode type:EAN8,EAN13, Code128, Code39, Code93,Codabar125
- Scan speed:74 scans/second
- Reading accuracy:0.10-0.852mm
- Reading distance:10-520mm